



GENERAL NOTES

DO NOT SCALE FROM THIS DRAWING

CONFIRM ALL DIMENSIONS AND SETOUTS ON SITE
PRIOR TO MANUFACTURE & INSTALLATION

ALL WORK IN ACCORDANCE WITH
RELEVANT AUSTRALIAN STANDARDS

TO BE READ IN CONJUNCTION WITH
ENGINEERS DOCUMENTS

LEGEND

WARRIEWOOD COMMUNITY CENTER - DEVELOPMENT APPLICATION DRAWING SET

DRAWING LIST	REVISION	DATE
DA-000-00 - COVER SHEET	01	18.12.20
DA-001-01 - SITE PLAN	01	18.12.20
DA-002-02 - SITE ANALYSIS PLAN	01	18.12.20
DA-003-03 - NOTIFICATIONS PLAN	01	18.12.20
DA-004-04 - DEMOLITION PLAN	01	18.12.20
DA-005-10 - FLOOR PLAN PROPOSED	01	18.12.20
DA-006-50 - ELEVATIONS - N/E	01	18.12.20
DA-006-51 - ELEVATIONS - S/W	01	18.12.20
DA-006-52 - ELEVATIONS - ORTHOGONAL	01	18.12.20
DA-006-53 - ELEVATIONS - ORTHOGONAL	01	18.12.20
DA-006-54 - ELEVATIONS - ORTHOGONAL	01	18.12.20
DA-007-40 - SECTIONS	01	18.12.20
DA-007-41 - SECTIONS	01	18.12.20
DA-008-80 - SOLAR ANALYSIS	01	18.12.20
DA-009-90 - MATERIAL SCHEDULE	01	18.12.20
DA-010-91 - CONSTRUCTION METHODOLOGY PLAN	01	18.12.20

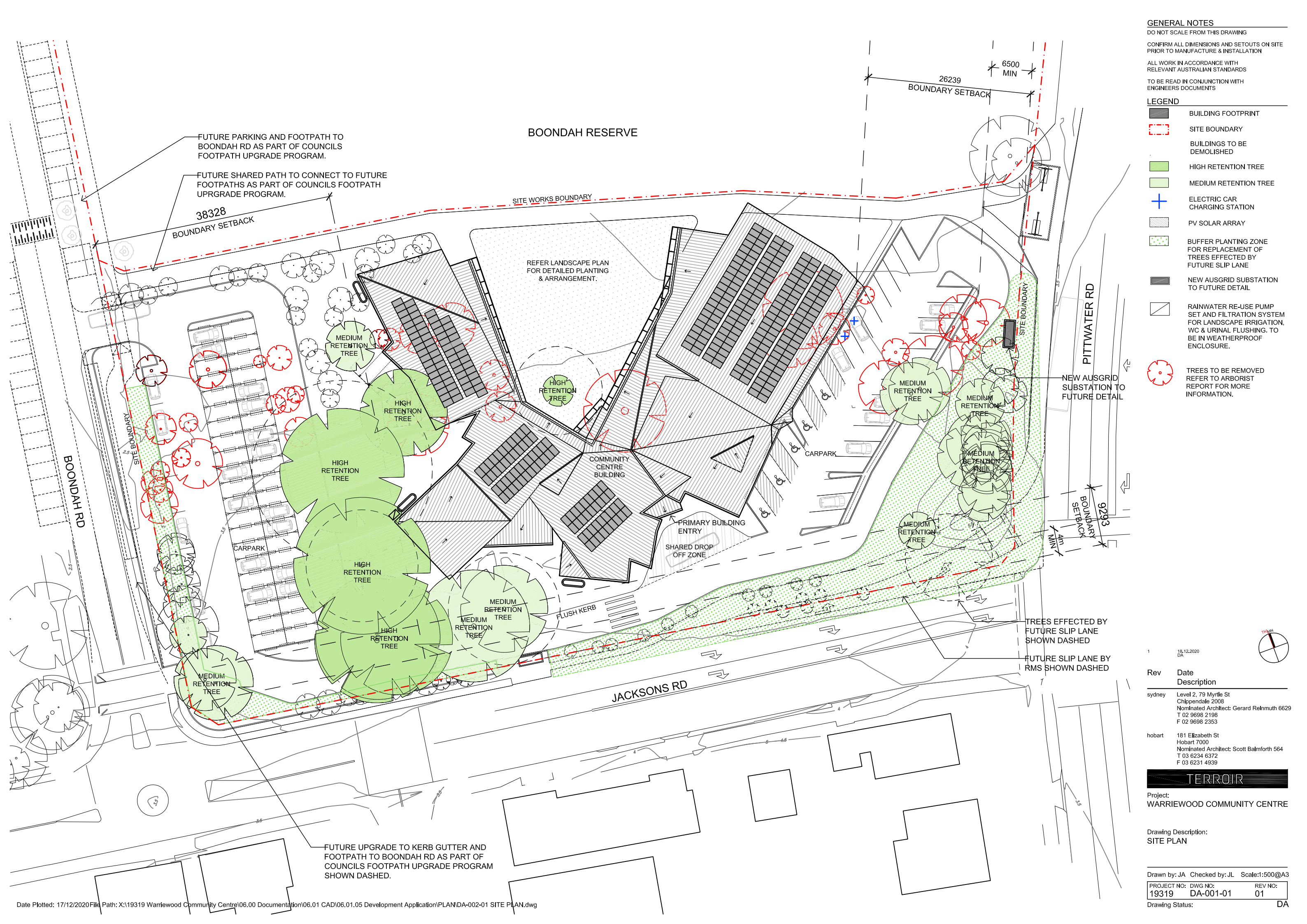
1	18.12.2020 DA
Rev	Date Description
sydney	Level 2, 79 Myrtle St Chippendale 2008 Nominated Architect: Gerard Reinmuth 6629 T 02 9698 2198 F 02 9698 2353
hobart	181 Elizabeth St Hobart 7000 Nominated Architect: Scott Balmforth 564 T 03 6234 6372 F 03 6231 4939

TERROIR

Project:
WARRIEWOOD COMMUNITY CENTRE

Drawing Description:
COVER SHEET

Drawn by:	Checked by:	Scale:NA
PROJECT NO: 19319	DWG NO: DA-000-00	REV NO: 01
Drawing Status:		DA



GENERAL NOTES
DO NOT SCALE FROM THIS DRAWING
CONFIRM ALL DIMENSIONS AND SETOUTS ON SITE PRIOR TO MANUFACTURE & INSTALLATION
ALL WORK IN ACCORDANCE WITH RELEVANT AUSTRALIAN STANDARDS
TO BE READ IN CONJUNCTION WITH ENGINEERS DOCUMENTS

- LEGEND**
- BUILDING FOOTPRINT
 - SITE BOUNDARY
 - BUILDINGS TO BE DEMOLISHED
 - HIGH RETENTION TREE
 - MEDIUM RETENTION TREE
 - ELECTRIC CAR CHARGING STATION
 - PV SOLAR ARRAY
 - BUFFER PLANTING ZONE FOR REPLACEMENT OF TREES EFFECTED BY FUTURE SLIP LANE
 - NEW AUSGRID SUBSTATION TO FUTURE DETAIL
 - RAINWATER RE-USE PUMP SET AND FILTRATION SYSTEM FOR LANDSCAPE IRRIGATION, WC & URINAL FLUSHING. TO BE IN WEATHERPROOF ENCLOSURE.
 - TREES TO BE REMOVED REFER TO ARBORIST REPORT FOR MORE INFORMATION.

1 18.12.2020 DA

Rev	Date	Description
sdney	18.12.2020	Level 2, 79 Myrtle St Chippendale 2008 Nominated Architect: Gerard Rehnuth 6629 T 02 9698 2198 F 02 9698 2353
hobart	18.12.2020	181 Elizabeth St Hobart 7000 Nominated Architect: Scott Balmforth 564 T 03 6234 6372 F 03 6231 4939

TERROIR

Project:
WARRIEWOOD COMMUNITY CENTRE

Drawing Description:
SITE PLAN

Drawn by: JA Checked by: JL Scale:1:500@A3
PROJECT NO: 19319 DWG NO: DA-001-01 REV NO: 01
Drawing Status: DA



GENERAL NOTES

DO NOT SCALE FROM THIS DRAWING
CONFIRM ALL DIMENSIONS AND SETOUTS ON SITE
PRIOR TO MANUFACTURE & INSTALLATION
ALL WORK IN ACCORDANCE WITH
RELEVANT AUSTRALIAN STANDARDS
TO BE READ IN CONJUNCTION WITH
ENGINEERS DOCUMENTS
LEGEND

➔ DIRECTION & % PREVAILING WINDS
EXISTING SITE PHOTOS
ESTABLISHED TREES



1 18.12.2020
DA

Rev Date
Description

sydney Level 2, 79 Myrtle St
Chippendale 2008
Nominated Architect: Gerard Reinmuth 6629
T 02 9698 2198
F 02 9698 2353

hobart 181 Elizabeth St
Hobart 7000
Nominated Architect: Scott Balmforth 564
T 03 6234 6372
F 03 6231 4939

TERROIR

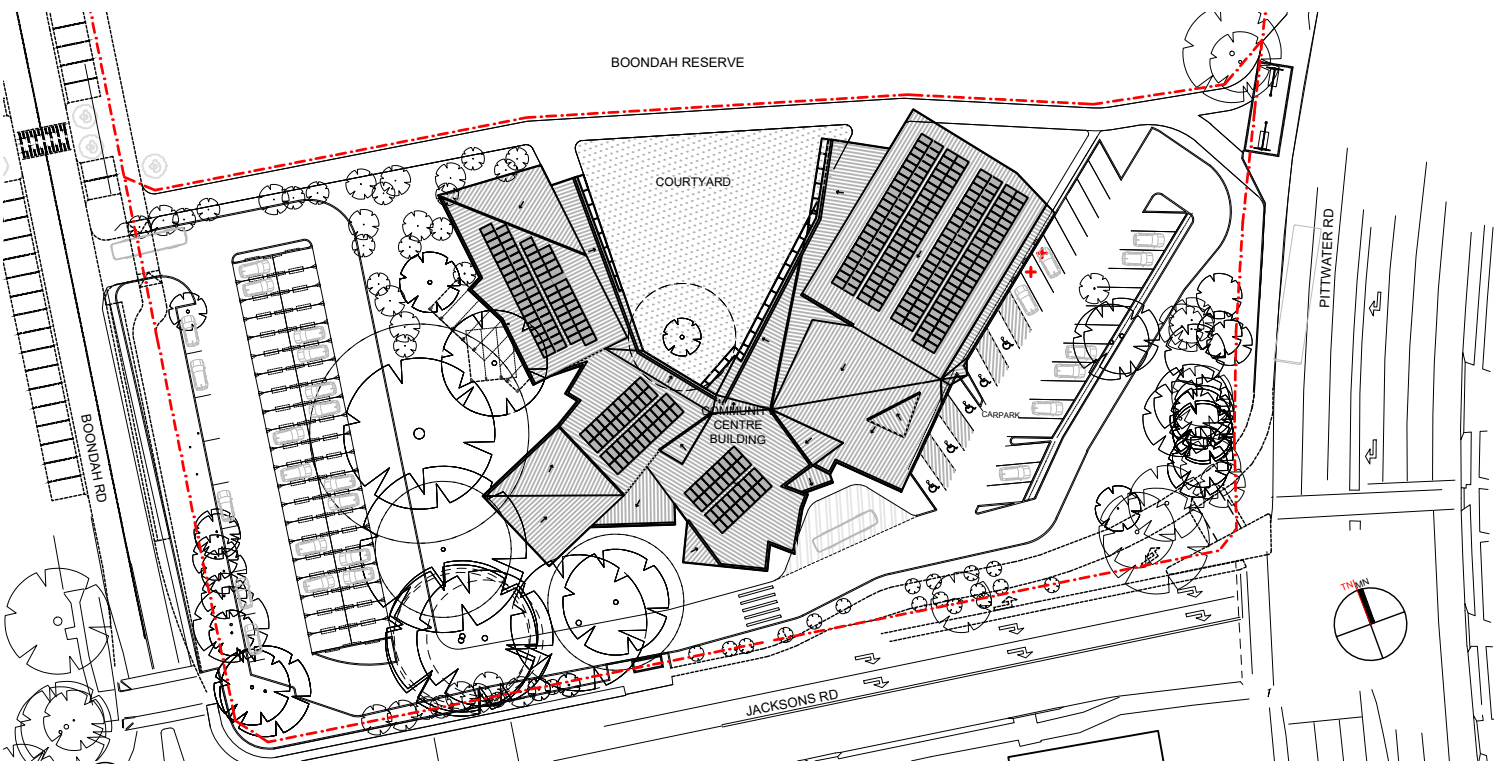
Project:
WARRIEWOOD COMMUNITY CENTRE

Drawing Description:
SITE ANALYSIS PLAN

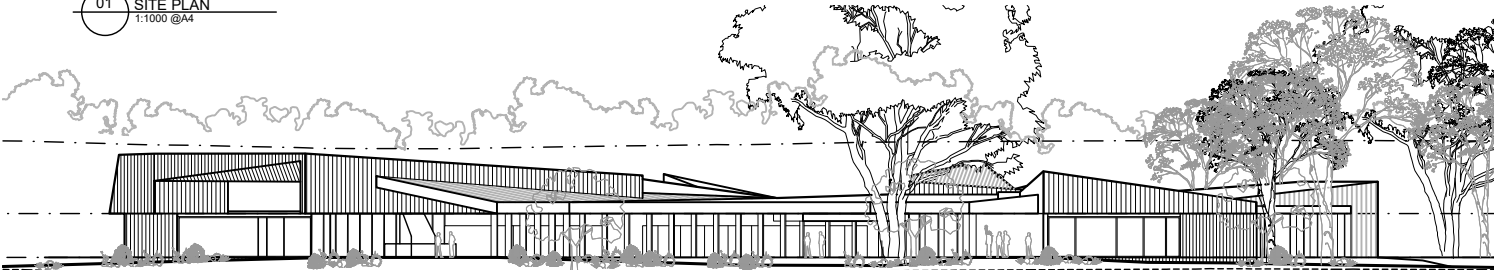
Drawn by: IB Checked by: JL Scale: 1:500@A3

PROJECT NO: DWG NO: REV NO:
19319 DA-002-02 01

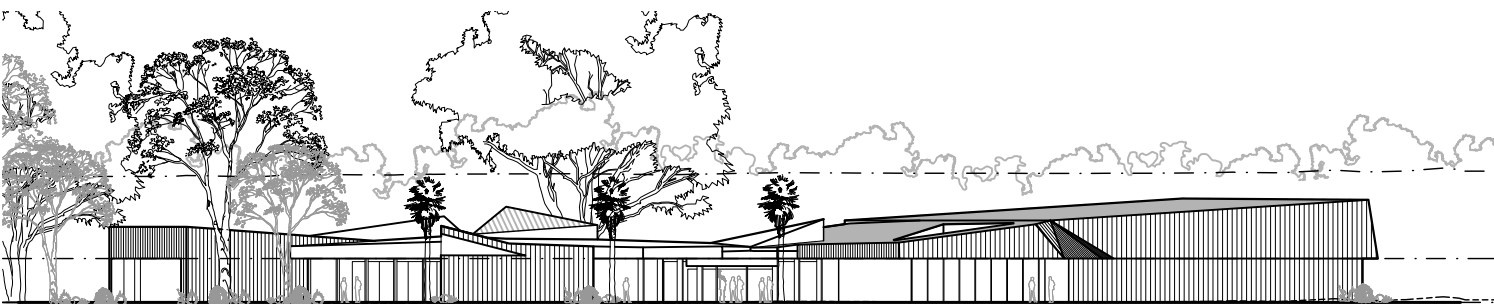
Drawing Status: DA



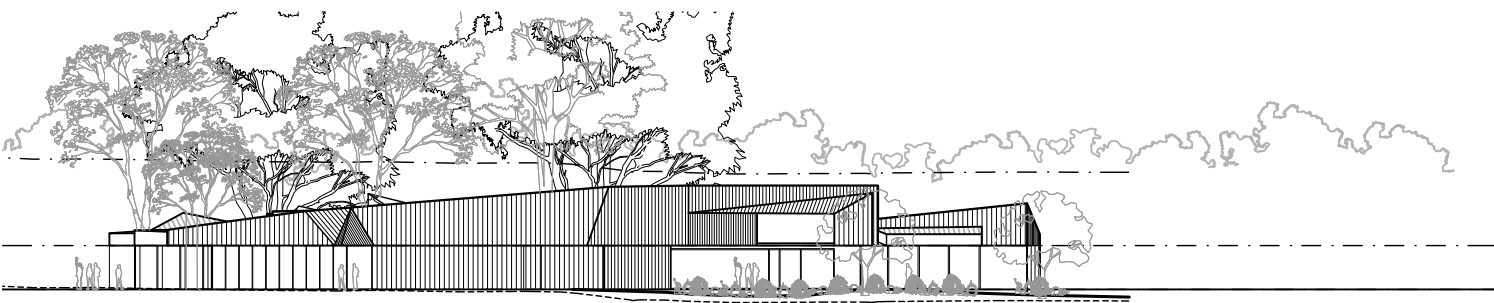
01 SITE PLAN
1:1000 @A4



02 NORTH ELEVATION
1:500 @A4



03 SOUTH ELEVATION
1:500 @A4



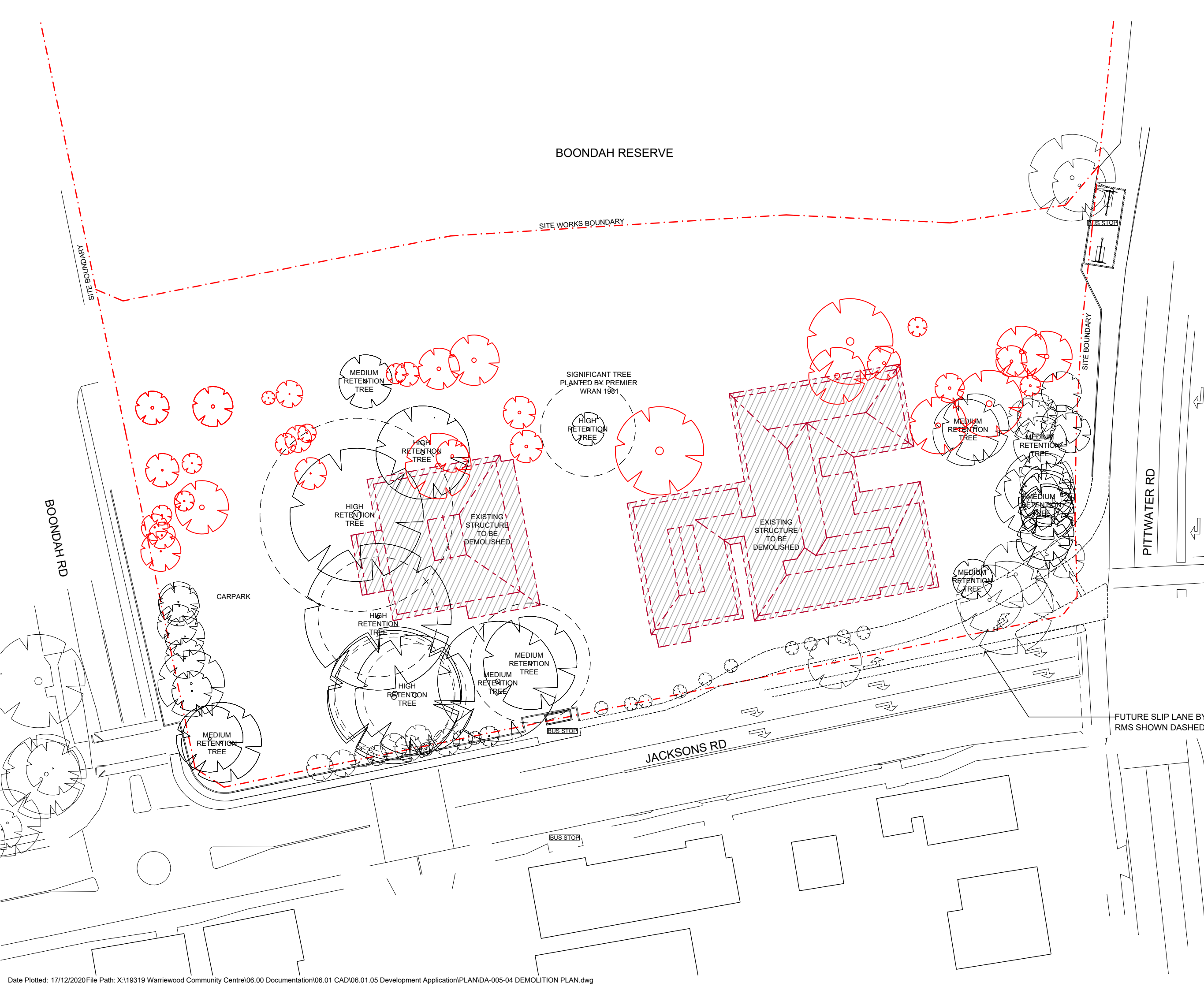
04 EAST ELEVATION
1:500



05 WEST ELEVATION
1:500 @A4

TERROIR
www.terroir.com.au
Project:
WARRIEWOOD COMMUNITY CENTRE
Drawing Description:
NOTIFICATIONS PLAN

PROJECT NO: 19319 DWG NO: DA-003-03 SCALE: AS NOTED



GENERAL NOTES
DO NOT SCALE FROM THIS DRAWING
CONFIRM ALL DIMENSIONS AND SETOUTS ON SITE PRIOR TO MANUFACTURE & INSTALLATION
ALL WORK IN ACCORDANCE WITH RELEVANT AUSTRALIAN STANDARDS
TO BE READ IN CONJUNCTION WITH ENGINEERS DOCUMENTS
LEGEND

- TREES TO BE REMOVED
REFER TO ARBORIST REPORT FOR MORE DETAIL.
- SITE BOUNDARY
- BUILDINGS TO BE DEMOLISHED

Rev	Date	Description
1	18.12.2020	DA
sydney	Level 2, 79 Myrtle St Chippendale 2008 Nominated Architect: Gerard Reinmuth 6629 T 02 9698 2198 F 02 9698 2353	
hobart	181 Elizabeth St Hobart 7000 Nominated Architect: Scott Balmforth 564 T 03 6234 6372 F 03 6231 4939	

TERROIR

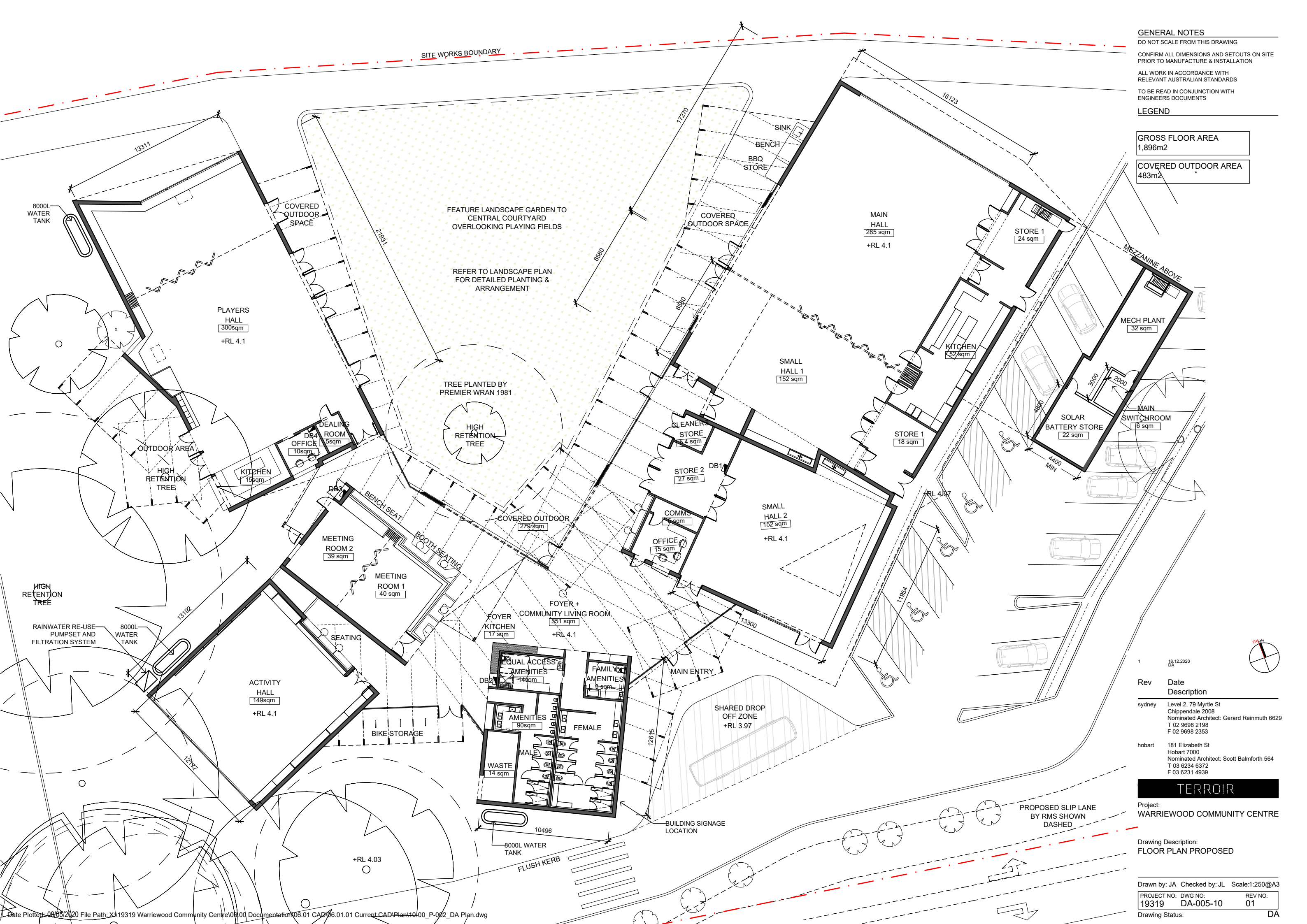
Project:
WARRIEWOOD COMMUNITY CENTRE

Drawing Description:
DEMOLITION PLAN

Drawn by: IB Checked by: JL Scale:1:500@A3

PROJECT NO:	DWG NO:	REV NO:
19319	DA-004-04	01

Drawing Status: DA



GENERAL NOTES

DO NOT SCALE FROM THIS DRAWING
CONFIRM ALL DIMENSIONS AND SETOUTS ON SITE
PRIOR TO MANUFACTURE & INSTALLATION
ALL WORK IN ACCORDANCE WITH
RELEVANT AUSTRALIAN STANDARDS
TO BE READ IN CONJUNCTION WITH
ENGINEERS DOCUMENTS

LEGEND

GROSS FLOOR AREA
1,896m²
COVERED OUTDOOR AREA
483m²

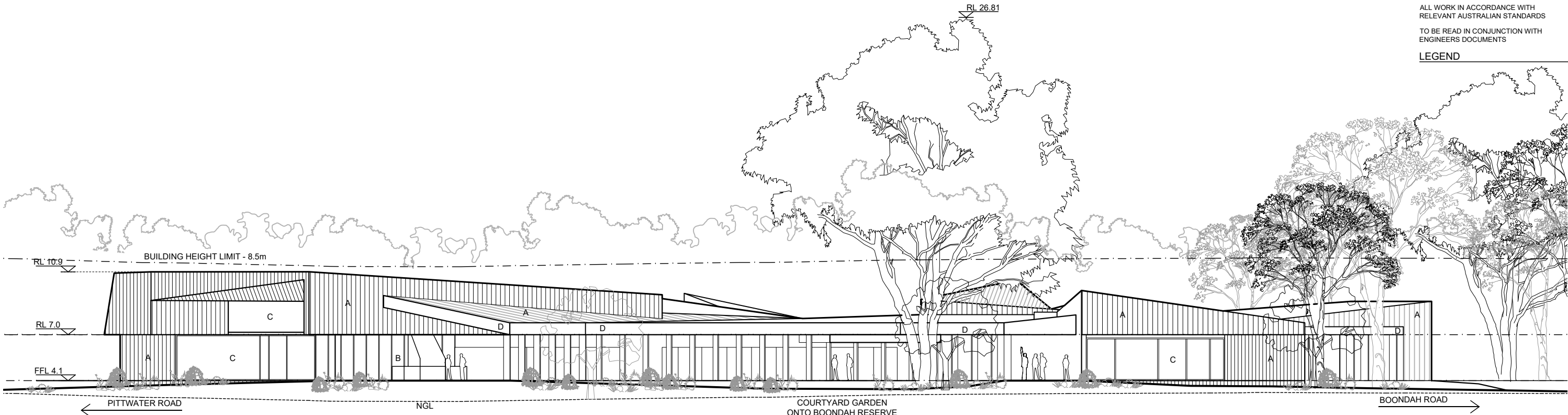
Rev	Date	Description
1	18.12.2020	DA
sydney	Level 2, 79 Myrtle St Chippendale 2008 Nominated Architect: Gerard Reinmuth 6629 T 02 9698 2198 F 02 9698 2353	
hobart	181 Elizabeth St Hobart 7000 Nominated Architect: Scott Balmforth 564 T 03 6234 6372 F 03 6231 4939	

TERROIR
Project:
WARRIEWOOD COMMUNITY CENTRE

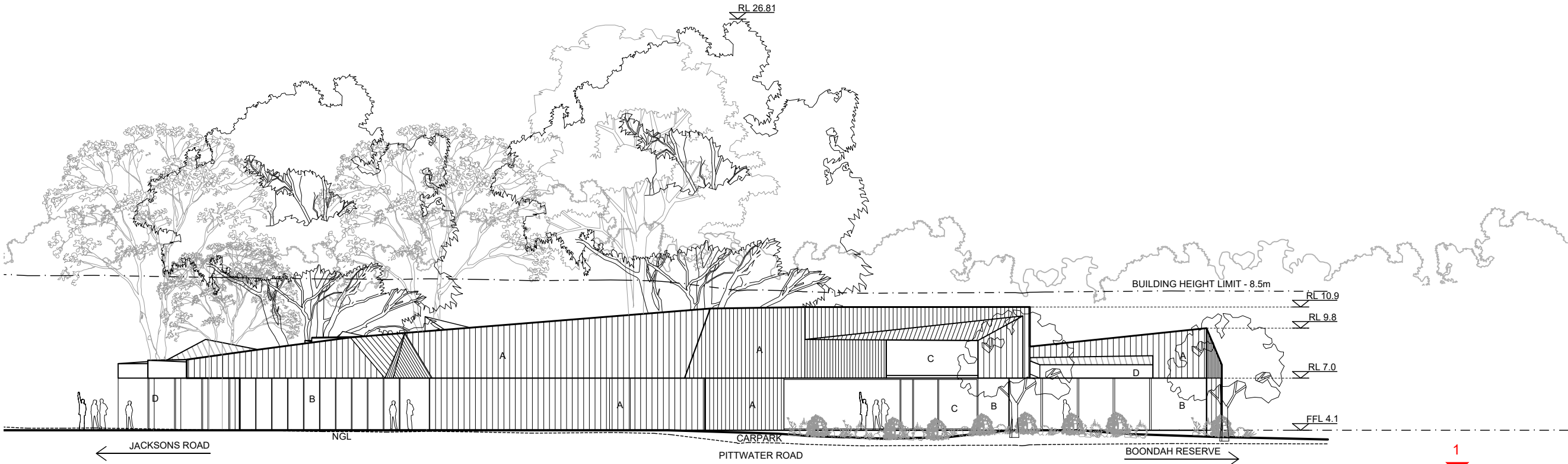
Drawing Description:
FLOOR PLAN PROPOSED

Drawn by: JA Checked by: JL Scale:1:250@A3
PROJECT NO: DWG NO: REV NO:
19319 DA-005-10 01
Drawing Status: DA

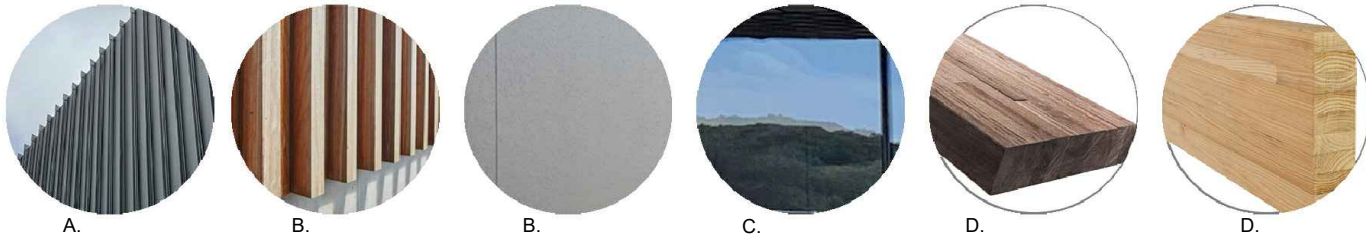
GENERAL NOTES
DO NOT SCALE FROM THIS DRAWING
CONFIRM ALL DIMENSIONS AND SETOUTS ON SITE
PRIOR TO MANUFACTURE & INSTALLATION
ALL WORK IN ACCORDANCE WITH
RELEVANT AUSTRALIAN STANDARDS
TO BE READ IN CONJUNCTION WITH
ENGINEERS DOCUMENTS
LEGEND



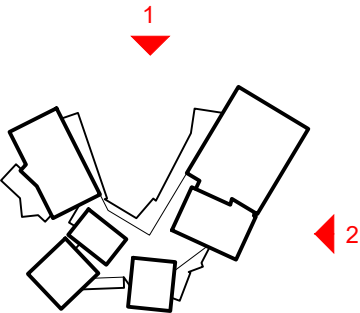
01 NORTH ELEVATION
1:250



02 EAST ELEVATION
1:250



FINISHES LEGEND
A - METAL CLADDING
B - TIMBER CLADDING
(cement sheet underlay)
C - GLAZING
D - GLULAM BEAMS/COLUMNS



1	18.12.2020	DA
Rev	Date	Description
sydney	Level 2, 79 Myrtle St Chippendale 2008 Nominated Architect: Gerard Reinmuth 6629 T 02 9698 2198 F 02 9698 2353	
hobart	181 Elizabeth St Hobart 7000 Nominated Architect: Scott Balmforth 564 T 03 6234 6372 F 03 6231 4939	

TERROIR
Project:
WARRIEWOOD COMMUNITY CENTRE

Drawing Description:
ELEVATIONS NORTH & EAST

Drawn by: JA Checked by: JL Scale:1:250@A3
PROJECT NO: 19319 DWG NO: DA-006-50 REV NO: 01
Drawing Status: DA

GENERAL NOTES

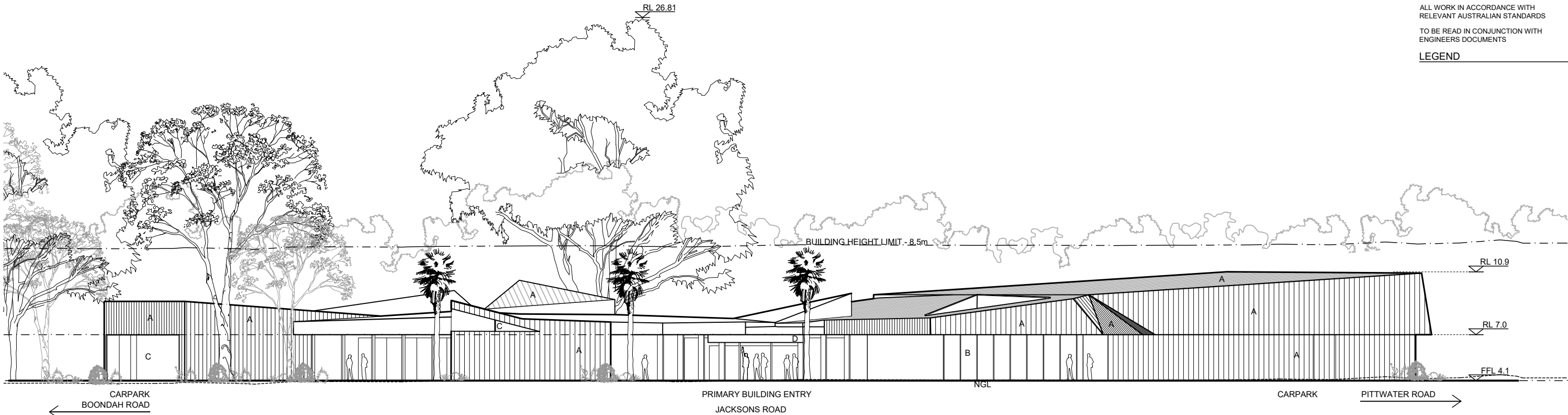
DO NOT SCALE FROM THIS DRAWING

CONFIRM ALL DIMENSIONS AND SETOUTS ON SITE
PRIOR TO MANUFACTURE & INSTALLATION

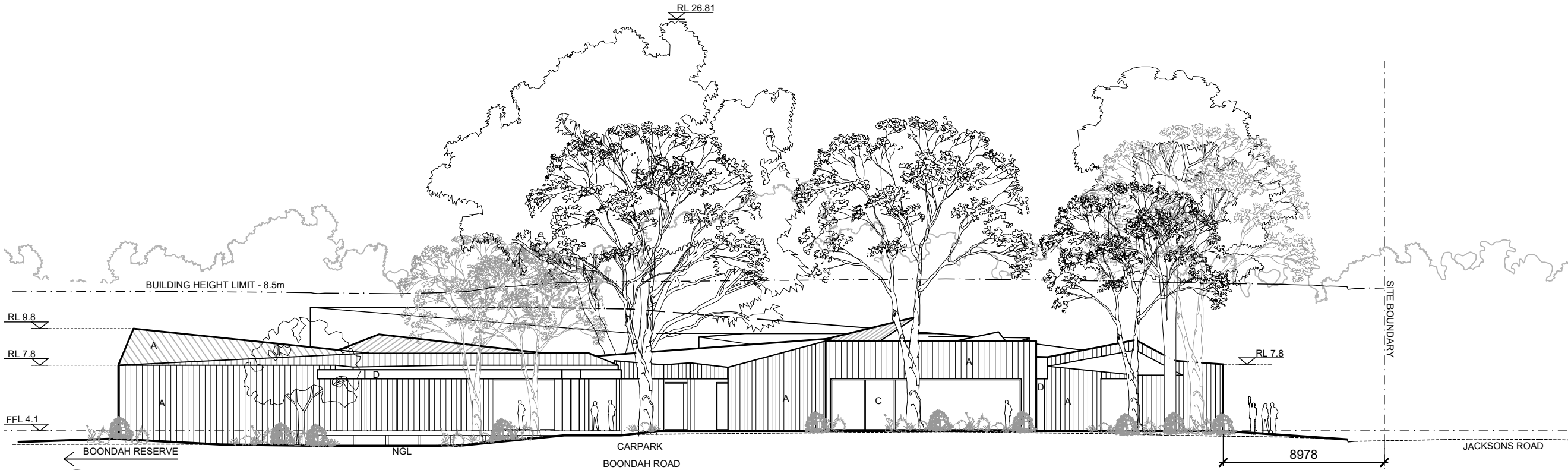
ALL WORK IN ACCORDANCE WITH
RELEVANT AUSTRALIAN STANDARDS

TO BE READ IN CONJUNCTION WITH
ENGINEERS DOCUMENTS

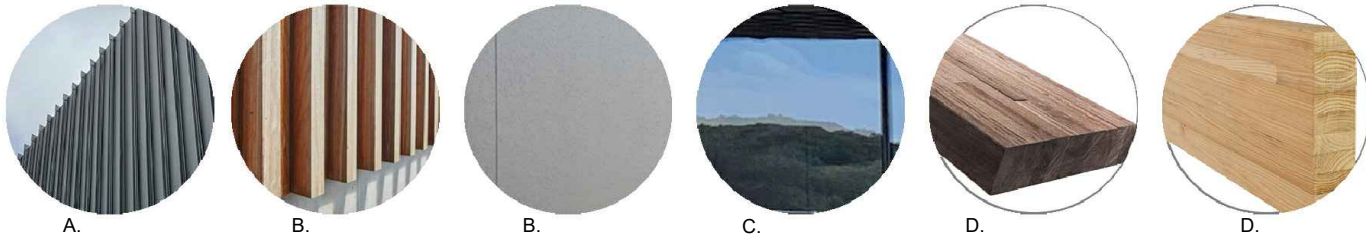
LEGEND



01 SOUTH ELEVATION
10-00 1:250

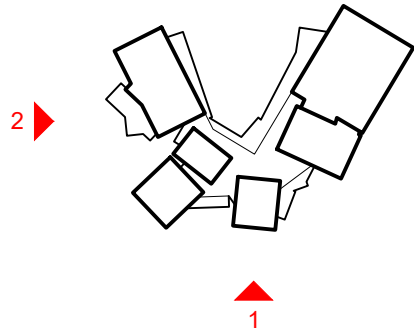


02 WEST ELEVATION
10-00 1:250



FINISHES LEGEND

A - METAL CLADDING
B - TIMBER CLADDING
(cement sheet underlay)
C - GLAZING
D - GLULAM BEAMS/COLUMNS



1	18.12.2020 DA
Rev	Date Description
sydney	Level 2, 79 Myrtle St Chippendale 2008 Nominated Architect: Gerard Reinmuth 6629 T 02 9698 2198 F 02 9698 2353
hobart	181 Elizabeth St Hobart 7000 Nominated Architect: Scott Balmforth 564 T 03 6234 6372 F 03 6231 4939

TERROIR

Project:
WARRIEWOOD COMMUNITY CENTRE

Drawing Description:
ELEVATIONS SOUTH & WEST

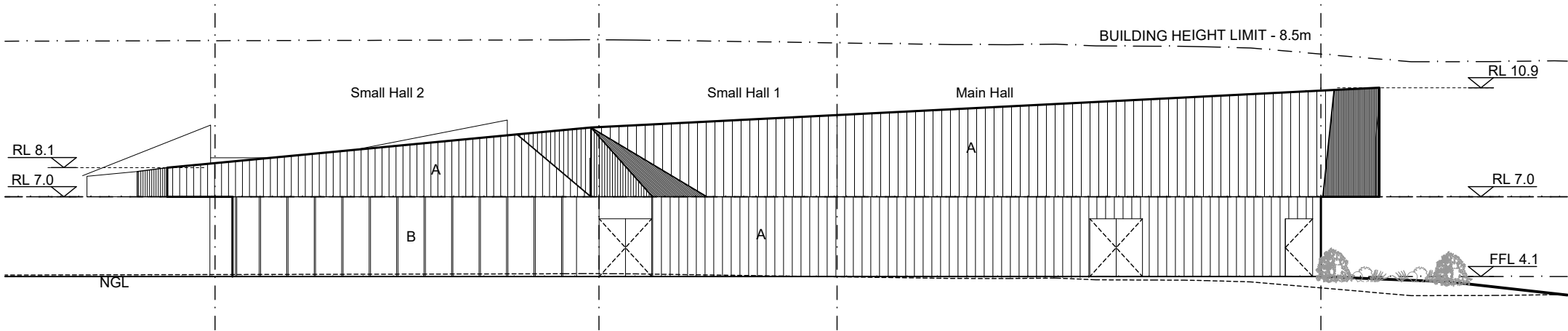
Drawn by: JA Checked by: JL Scale:1:250@A3

PROJECT NO:	DWG NO:	REV NO:
19319	DA-006-51	01

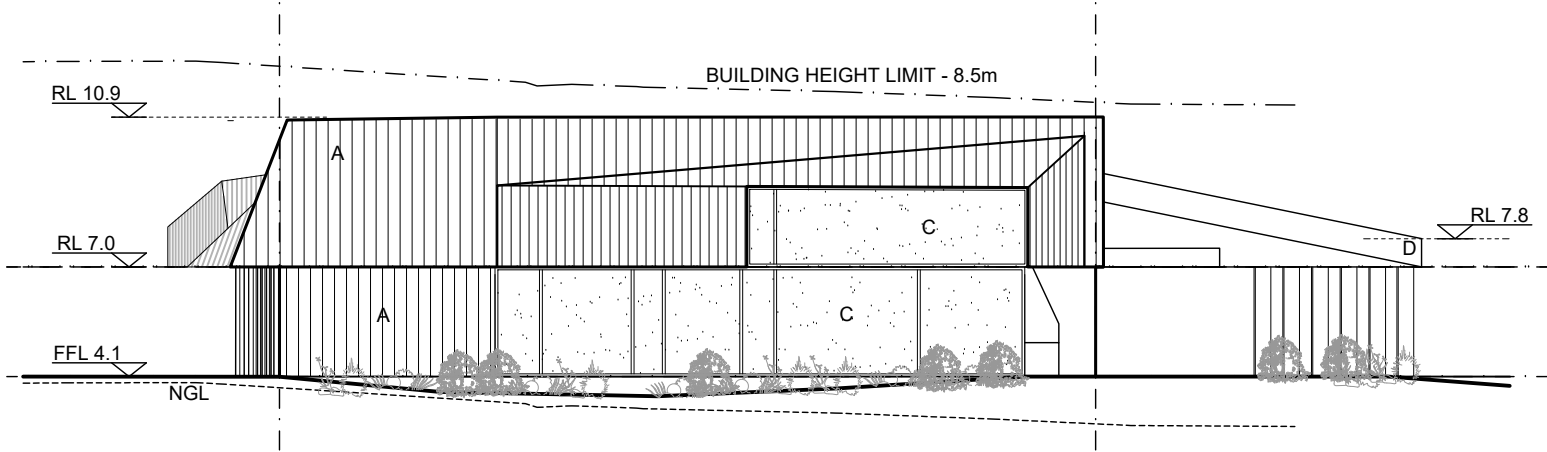
Drawing Status: DA

GENERAL NOTES
DO NOT SCALE FROM THIS DRAWING
CONFIRM ALL DIMENSIONS AND SETOUTS ON SITE
PRIOR TO MANUFACTURE & INSTALLATION
ALL WORK IN ACCORDANCE WITH
RELEVANT AUSTRALIAN STANDARDS
TO BE READ IN CONJUNCTION WITH
ENGINEERS DOCUMENTS
LEGEND

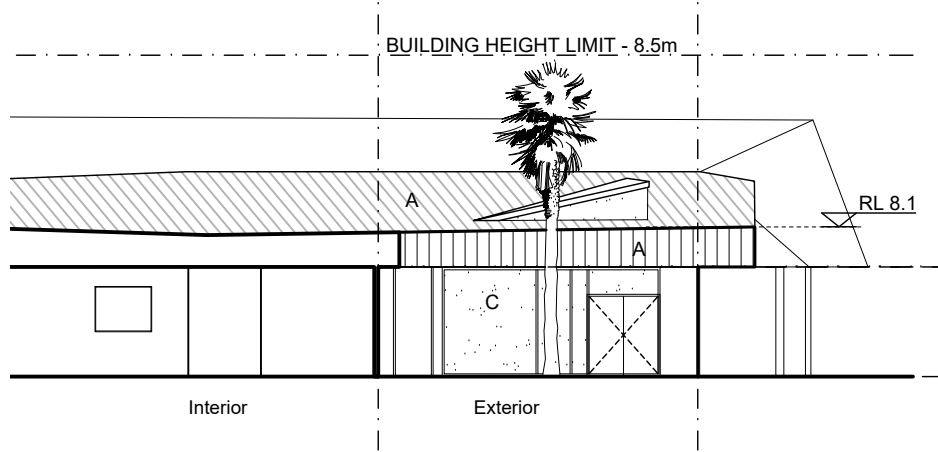
FINISHES LEGEND
A - METAL CLADDING
B - TIMBER CLADDING
(cement sheet underlay)
C - GLAZING
D - GLULAM BEAMS/COLUMNS



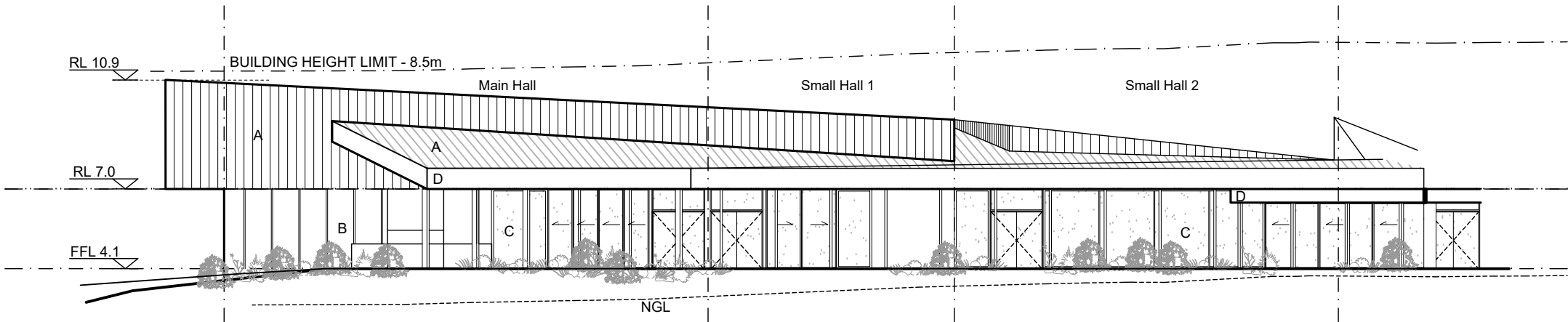
01 ELEVATION SOUTH- MAIN HALL
1:200



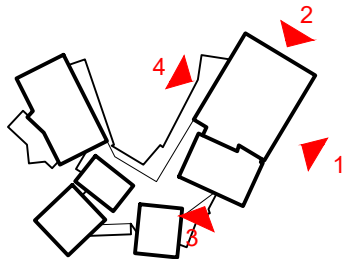
02 ELEVATION EAST- MAIN HALL
1:200



03 ELEVATION WEST- MAIN HALL
1:200



04 ELEVATION NORTH- MAIN HALL
1:200



1	18.12.2020 DA
Rev	Date Description
sydney	Level 2, 79 Myrtle St Chippendale 2008 Nominated Architect: Gerard Reinmuth 6629 T 02 9698 2198 F 02 9698 2353
hobart	181 Elizabeth St Hobart 7000 Nominated Architect: Scott Balmforth 564 T 03 6234 6372 F 03 6231 4939

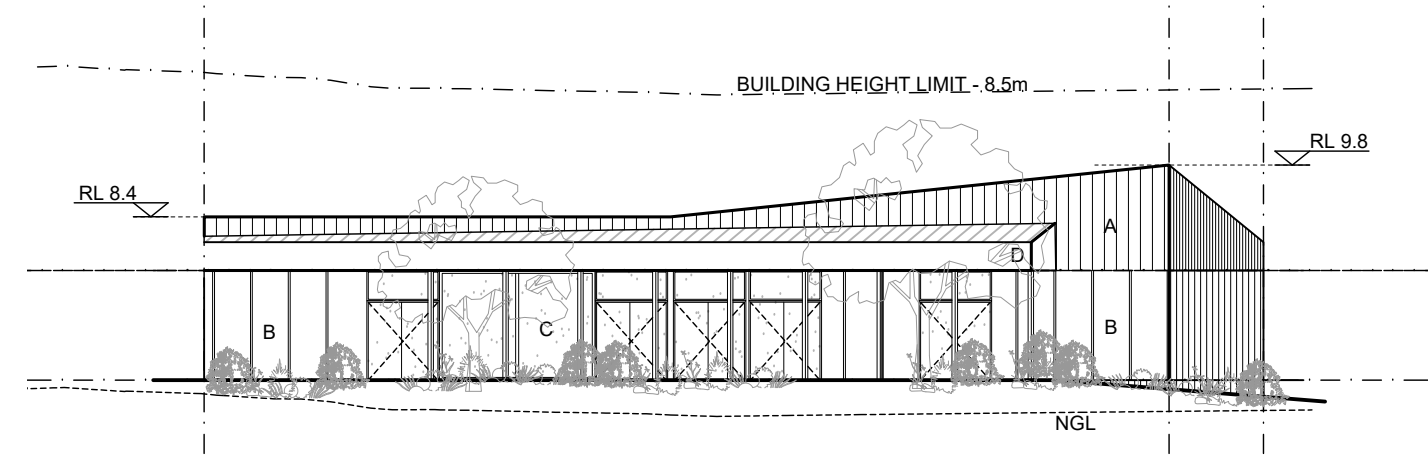
TERROIR
Project:
WARRIWOOD COMMUNITY CENTRE

Drawing Description:
ELEVATIONS - MAIN HALL

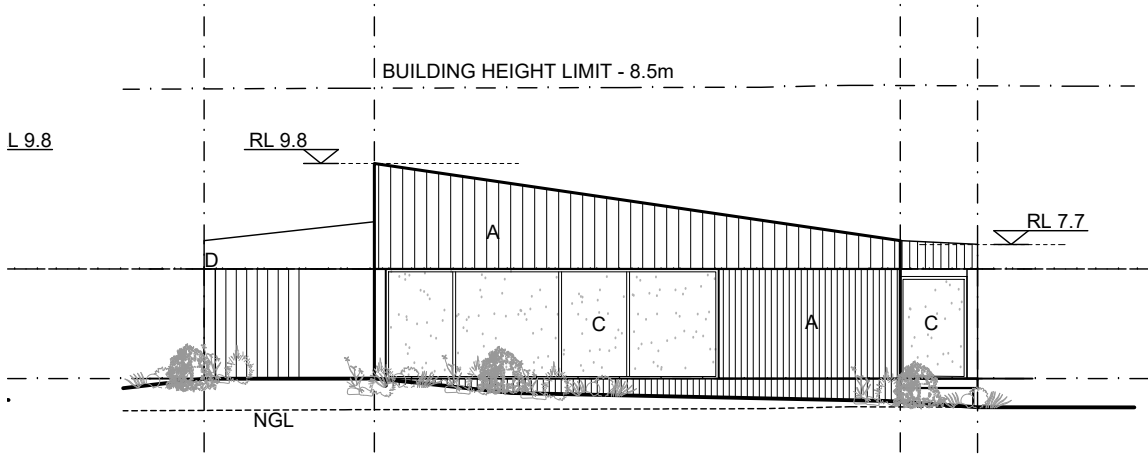
Drawn by: JA Checked by: JL Scale:1:200@A3
PROJECT NO: 19319 DWG NO: DA-006-52 REV NO: 01
Drawing Status: DA

GENERAL NOTES
DO NOT SCALE FROM THIS DRAWING
CONFIRM ALL DIMENSIONS AND SETOUTS ON SITE
PRIOR TO MANUFACTURE & INSTALLATION
ALL WORK IN ACCORDANCE WITH
RELEVANT AUSTRALIAN STANDARDS
TO BE READ IN CONJUNCTION WITH
ENGINEERS DOCUMENTS
LEGEND

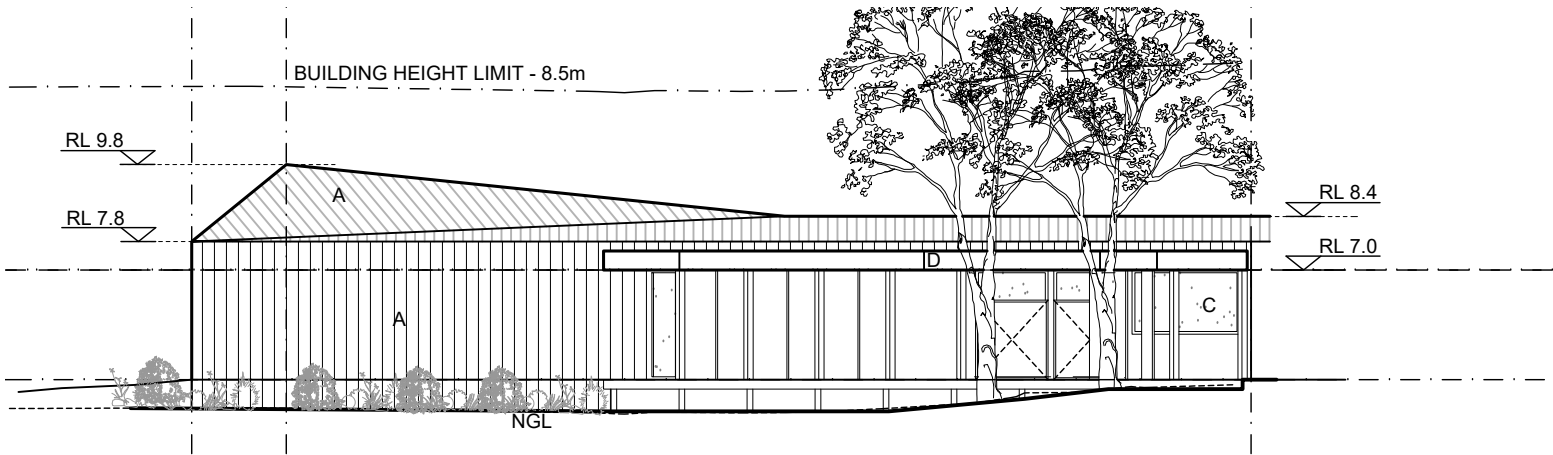
FINISHES LEGEND
A - METAL CLADDING
B - TIMBER CLADDING
(cement sheet underlay)
C - GLAZING
D - GLULAM BEAMS/COLUMNS



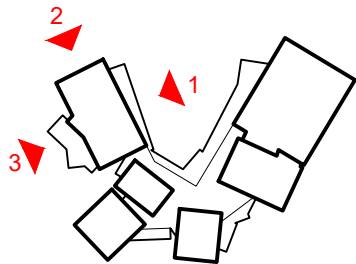
01 ELEVATION EAST- PLAYERS HALL
1:200



02 ELEVATION NORTH- PLAYERS HALL
1:200



03 ELEVATION WEST- PLAYERS HALL
1:200



1	18.12.2020 DA
Rev	Date Description
sydney	Level 2, 79 Myrtle St Chippendale 2008 Nominated Architect: Gerard Reinmuth 6629 T 02 9698 2198 F 02 9698 2353
hobart	181 Elizabeth St Hobart 7000 Nominated Architect: Scott Balmforth 564 T 03 6234 6372 F 03 6231 4939

TERROIR

Project:
WARRIEWOOD COMMUNITY CENTRE

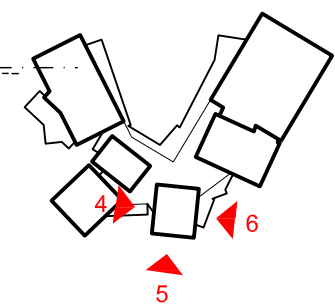
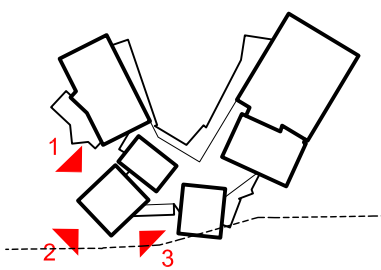
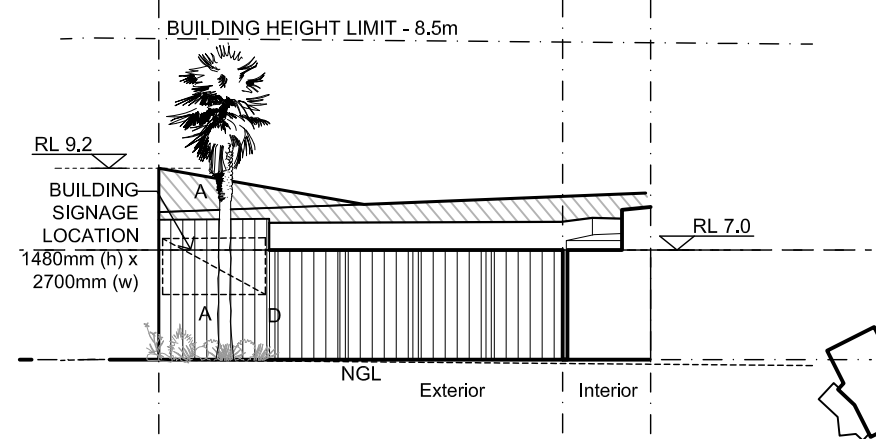
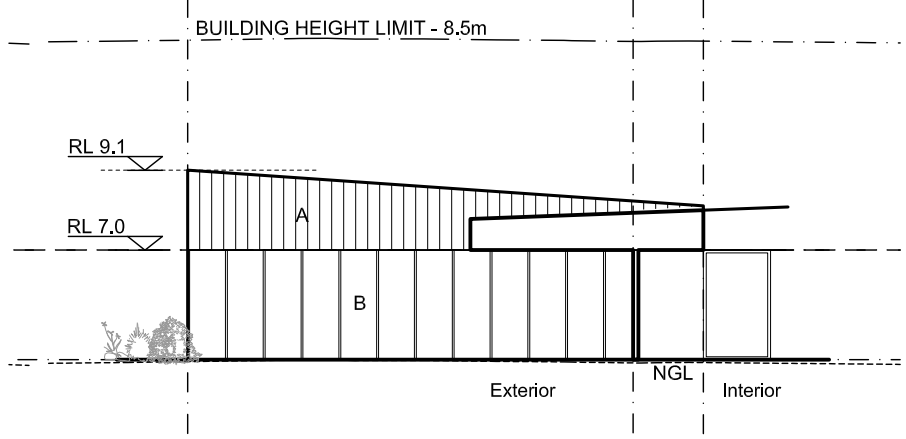
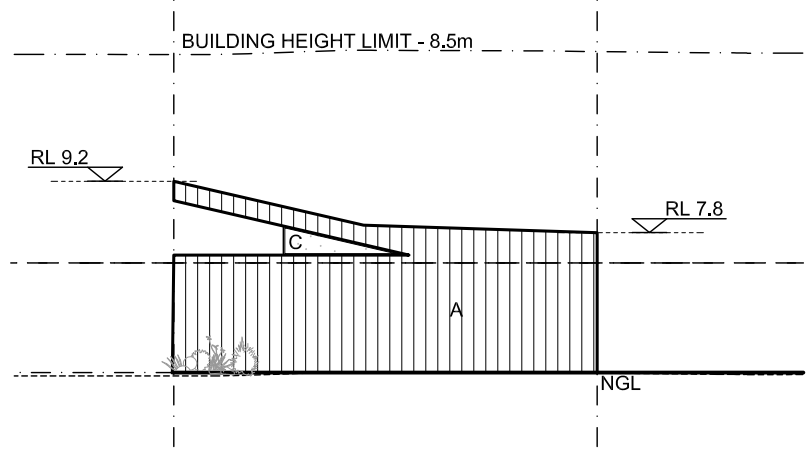
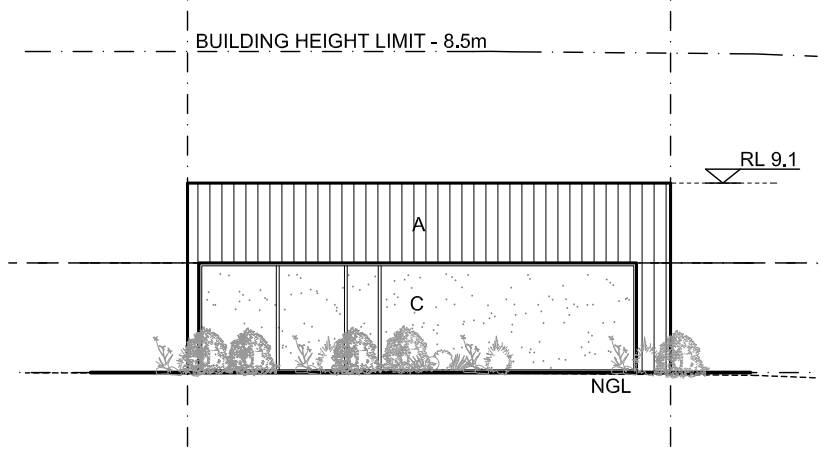
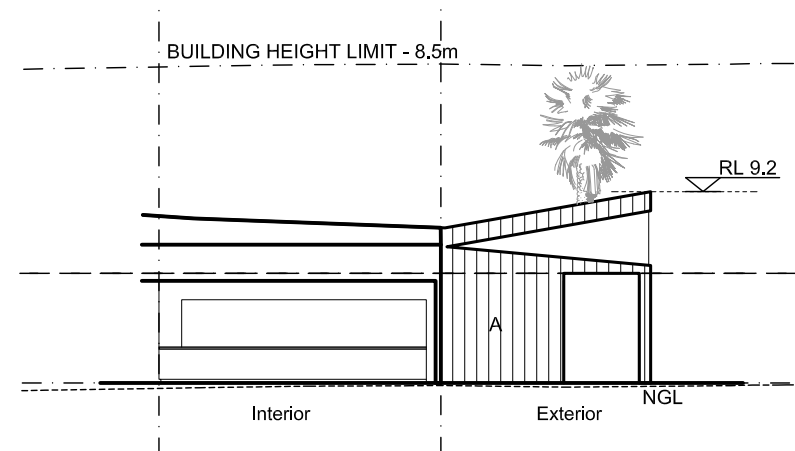
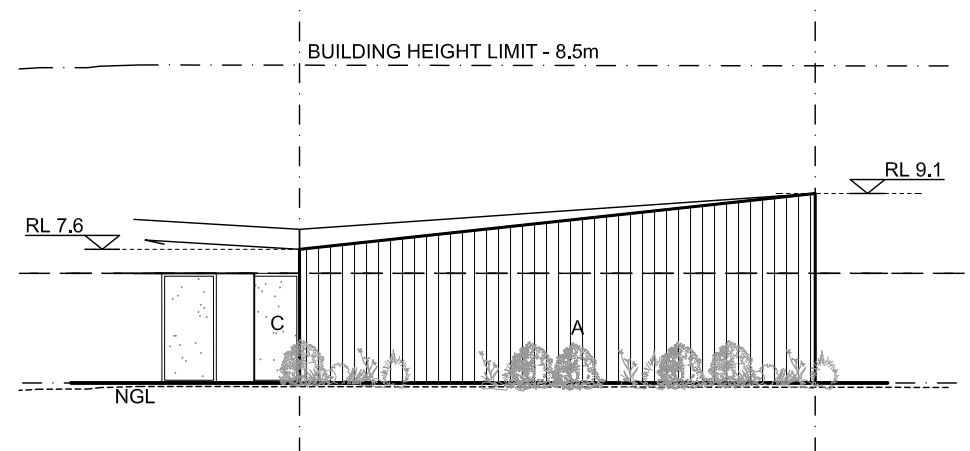
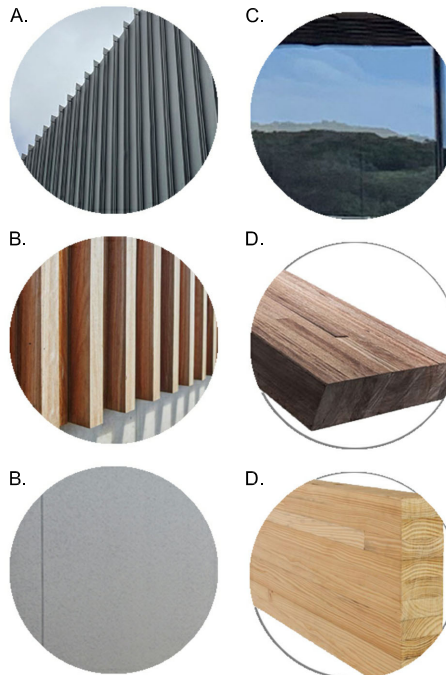
Drawing Description:
ELEVATIONS - PLAYERS HALL

Drawn by: JA Checked by: JL Scale:1:200@A3
PROJECT NO: 19319 DWG NO: DA-006-53 REV NO: 01
Drawing Status: DA

GENERAL NOTES
DO NOT SCALE FROM THIS DRAWING
CONFIRM ALL DIMENSIONS AND SETOUTS ON SITE PRIOR TO MANUFACTURE & INSTALLATION
ALL WORK IN ACCORDANCE WITH RELEVANT AUSTRALIAN STANDARDS
TO BE READ IN CONJUNCTION WITH ENGINEERS DOCUMENTS

LEGEND

- FINISHES LEGEND**
- A - METAL CLADDING
 - B - TIMBER CLADDING (cement sheet underlay)
 - C - GLAZING
 - D - GLULAM BEAMS/COLUMNS



1	18.12.2020	DA
Rev	Date	Description
sydney	Level 2, 79 Myrtle St Chippendale 2008 Nominated Architect: Gerard Rehnuth 6629 T 02 9698 2198 F 02 9698 2353	
hobart	181 Elizabeth St Hobart 7000 Nominated Architect: Scott Balmforth 564 T 03 6234 6372 F 03 6231 4939	

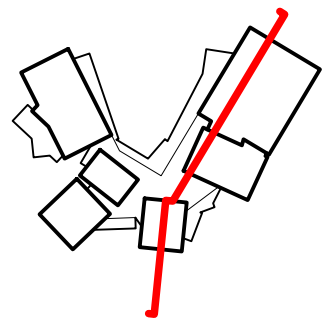
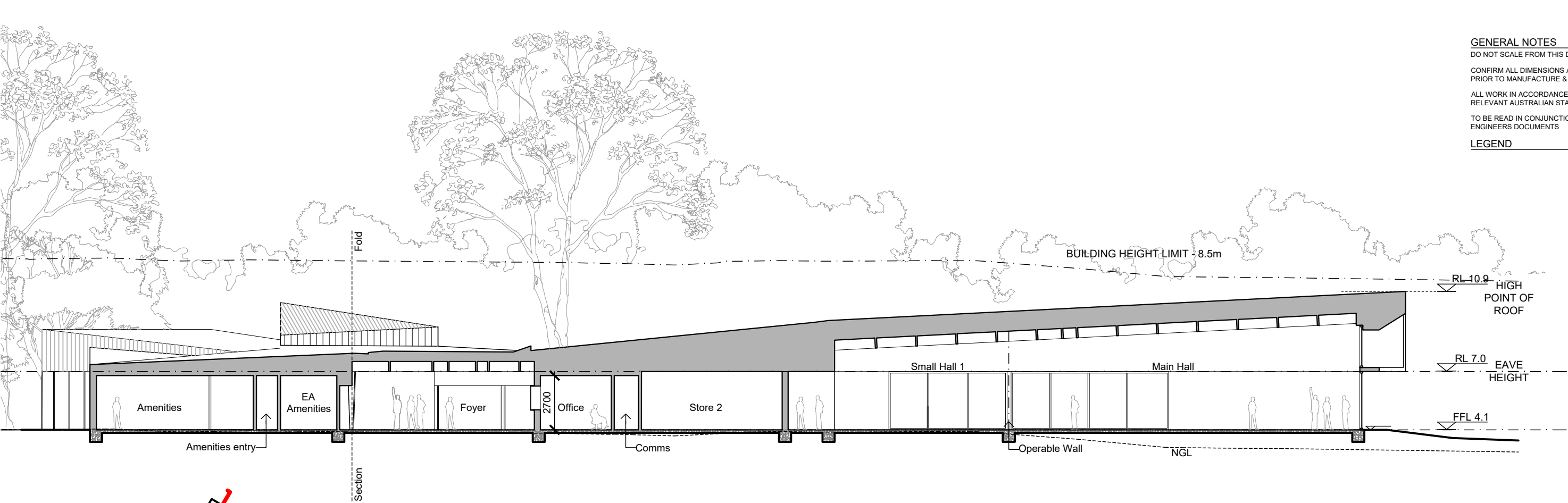
TERROIR

Project:
WARRIWOOD COMMUNITY CENTRE

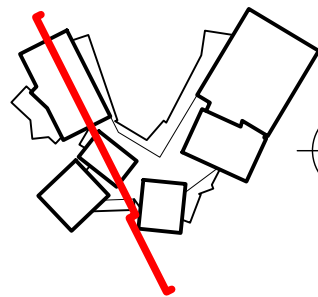
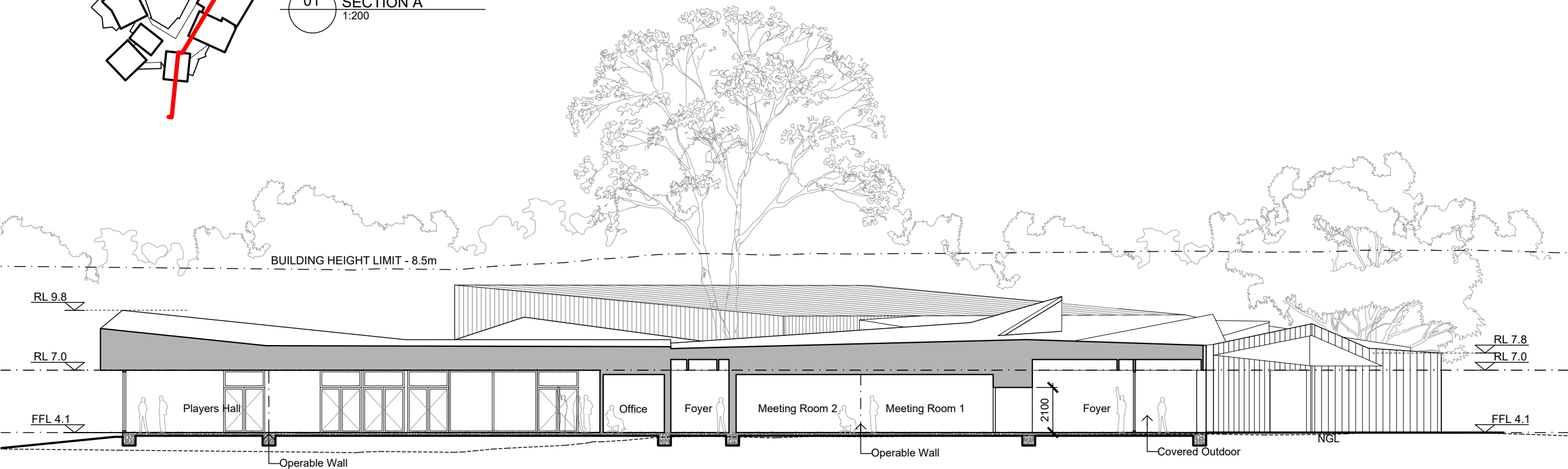
Drawing Description:
ELEVATIONS - ACTIVITY HALL & AMENITIES

Drawn by: JA	Checked by: JL	Scale: 1:200@A3
PROJECT NO: 19319	DWG NO: DA-006-54	REV NO: 01
Drawing Status:		DA

GENERAL NOTES
DO NOT SCALE FROM THIS DRAWING
CONFIRM ALL DIMENSIONS AND SETOUTS ON SITE
PRIOR TO MANUFACTURE & INSTALLATION
ALL WORK IN ACCORDANCE WITH
RELEVANT AUSTRALIAN STANDARDS
TO BE READ IN CONJUNCTION WITH
ENGINEERS DOCUMENTS
LEGEND



01 SECTION A
1:200



02 SECTION B
1:200

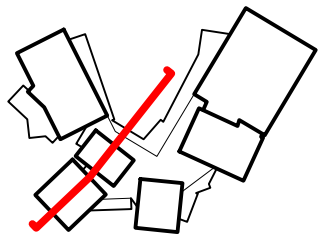
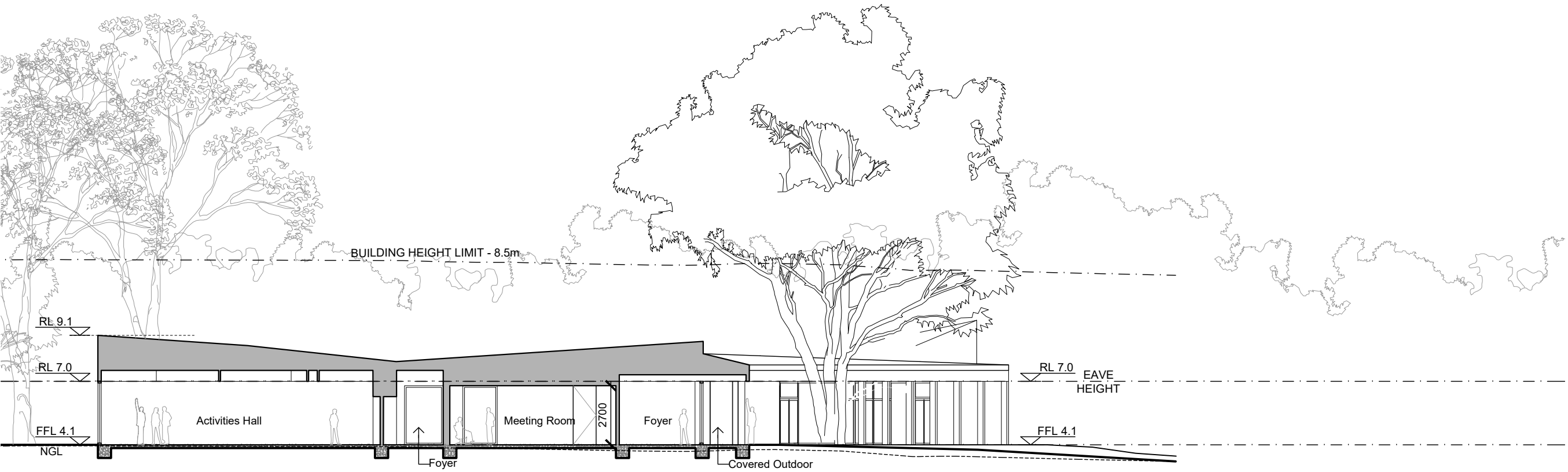
1	18.12.2020	DA
Rev	Date	Description
sydney	Level 2, 79 Myrtle St Chippendale 2008 Nominated Architect: Gerard Reinmuth 6629 T 02 9698 2198 F 02 9698 2353	
hobart	181 Elizabeth St Hobart 7000 Nominated Architect: Scott Balmforth 564 T 03 6234 6372 F 03 6231 4939	

TERROIR
Project:
WARRIEWOOD COMMUNITY CENTRE

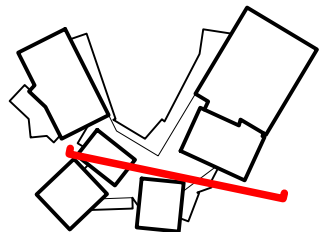
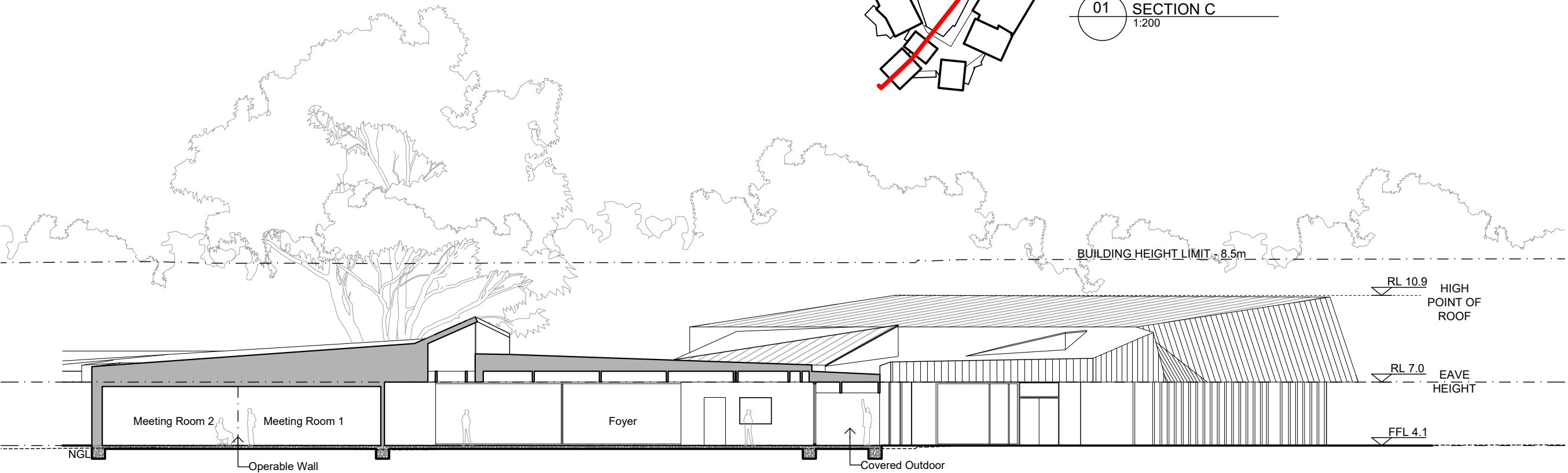
Drawing Description:
SECTIONS A & B

Drawn by: JA Checked by: JL Scale:1:200@A3
PROJECT NO: 19319 DWG NO: DA-007-40 REV NO: 01
Drawing Status: DA

GENERAL NOTES
DO NOT SCALE FROM THIS DRAWING
CONFIRM ALL DIMENSIONS AND SETOUTS ON SITE
PRIOR TO MANUFACTURE & INSTALLATION
ALL WORK IN ACCORDANCE WITH
RELEVANT AUSTRALIAN STANDARDS
TO BE READ IN CONJUNCTION WITH
ENGINEERS DOCUMENTS
LEGEND



01 SECTION C
1:200



02 SECTION D
1:200

1	18.12.2020 DA
Rev	Date Description
sydney	Level 2, 79 Myrtle St Chippendale 2008 Nominated Architect: Gerard Reinmuth 6629 T 02 9698 2198 F 02 9698 2353
hobart	181 Elizabeth St Hobart 7000 Nominated Architect: Scott Balmforth 564 T 03 6234 6372 F 03 6231 4939

TERROIR
Project:
WARRIEWOOD COMMUNITY CENTRE

Drawing Description:
SECTIONS C & D

Drawn by: JA Checked by: JL Scale:1:200@A3
PROJECT NO: 19319 DWG NO: DA-007-41 REV NO: 01
Drawing Status: DA

GENERAL NOTES

DO NOT SCALE FROM THIS DRAWING

CONFIRM ALL DIMENSIONS AND SETOUTS ON SITE
PRIOR TO MANUFACTURE & INSTALLATION

ALL WORK IN ACCORDANCE WITH
RELEVANT AUSTRALIAN STANDARDS

TO BE READ IN CONJUNCTION WITH
ENGINEERS DOCUMENTS

LEGEND



JUNE 21st - 9am



JUNE 21st - Noon



JUNE 21st - 3pm

1	18.12.2020 DA
Rev	Date Description
sydney	Level 2, 79 Myrtle St Chippendale 2008 Nominated Architect: Gerard Reinmuth 6629 T 02 9698 2198 F 02 9698 2353
hobart	181 Elizabeth St Hobart 7000 Nominated Architect: Scott Balmforth 564 T 03 6234 6372 F 03 6231 4939

TERROIR

Project:
WARRIEWOOD COMMUNITY CENTRE

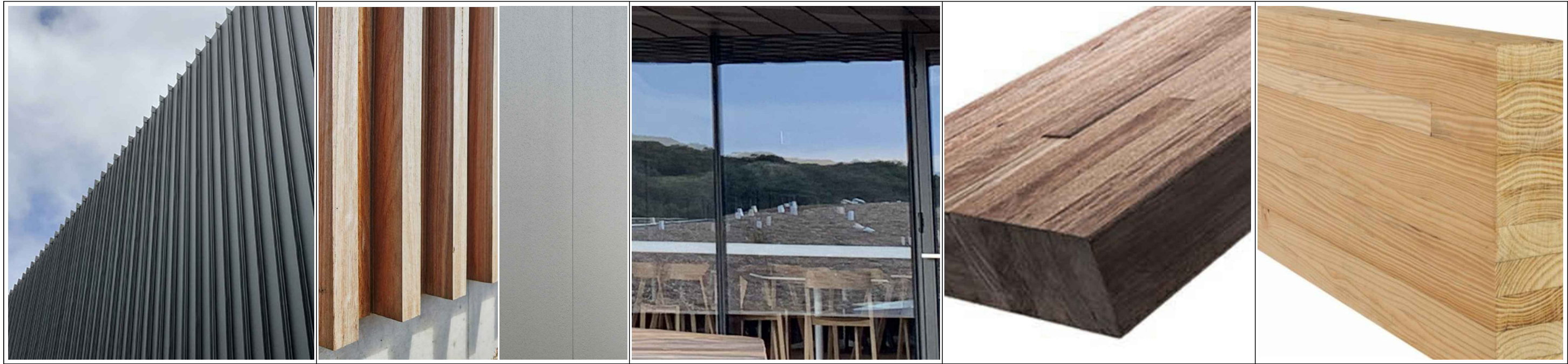
Drawing Description:
SOLAR ANALYSIS
SHADOW DIAGRAMS
WINTER SOLSTICE

Drawn by: JA Checked by: JL Scale:1:250@A3

PROJECT NO:	DWG NO:	REV NO:
19319	DA-008-80	01

Drawing Status: DA

EXTERNAL MATERIAL SCHEDULE - WARRIEWOOD COMMUNITY CENTRE



A.
Roof & wall cladding
Mack Bros Straightline 406 roof decking

Colour: Monument

B.
Timber wall cladding
Vertical hardwood timber boards on cement sheet

Colour: Natural finish - timber
Light grey - cement sheet

C.
Glazing
Aluminium framed doubled glazed windows and doors

Colour: Monument

D.
Exposed Structure
Hardwood timber beams & posts - Exposed

Colour: Natural timber finish

D.
Exposed Structure
Glulam timber beams - Undercover

Colour: Natural timber finish

1	18.12.2020 DA
Rev	Date Description
sydney	Level 2, 79 Myrtle St Chippendale 2008 Nominated Architect: Gerard Reinmuth 6629 T 02 9698 2198 F 02 9698 2353
hobart	181 Elizabeth St Hobart 7000 Nominated Architect: Scott Balmforth 564 T 03 6234 6372 F 03 6231 4939

TERROIR

Project:
WARRIEWOOD COMMUNITY CENTRE

Drawing Description:
MATERIAL SCHEDULE



GENERAL NOTES

DO NOT SCALE FROM THIS DRAWING

CONFIRM ALL DIMENSIONS AND SETOUTS ON SITE PRIOR TO MANUFACTURE & INSTALLATION

ALL WORK IN ACCORDANCE WITH RELEVANT AUSTRALIAN STANDARDS

TO BE READ IN CONJUNCTION WITH ENGINEERS DOCUMENTS

LEGEND

METHOD OF CONSTRUCTION
DEMOLITION OF EXISTING BUILDINGS
AS SHOWN ON DEMOLITION PLAN.

PREPARATION OF SITE AND
PROTECTION OF SIGNIFICANT TREES
AS PER ARBORISTS REPORT.

REMOVAL OF TREES AS PER
ARBORISTS REPORT.

RC SLAB ON GROUND WITH SCREW
PILES.

LIGHTWEIGHT TIMBER & STEEL
HYBRID CONSTRUCTION.

CLT PANEL WALLS & CEILING WITH
GLULAM BEAMS TO FOYER.

WHERE POSSIBLE TIMBER ELEMENTS
TO BE PREFABRICATED & BROUGHT
TO SITE FOR ASSEMBLY -
STREAMLINING THE CONSTRUCTION
PROCESS ON SITE.

LIGHTWEIGHT METAL CLAD ROOF AND
WALLS.

CRANES REQUIRED DURING
CONSTRUCTION TO UTILISE EXISTING
CARPARK & AVOID DAMAGE TO TREES
AS SHOWN.

 INDICATE POTENTIAL CRANE
LOCATIONS

ALL VEHICLES ARE TO ENTER AND
EXIT THE SITE IN A FORWARD
DIRECTION.
TRAFFIC CONTROLLERS WILL BE
PROVIDED ON DAYS OF MULTIPLE
TRUCK MOVEMENTS (BULK
EARTHWORKS, CONCRETE POURS
ETC)

UPON COMPLETION OF WORKS,
CONTRACTOR IS TO RE-ESTABLISH &
MAKE GOOD ALL INTERFACES
BETWEEN SITE WORKS AREA AND
SURROUNDS, AS IMPACTED BY THIS
SCOPE OF WORKS.

1	18.12.2020	DA
Rev	Date	Description
sydney	Level 2, 79 Myrtle St Chippendale 2008 Nominated Architect: Gerard Reinmuth 6629 T 02 9698 2198 F 02 9698 2353	
hobart	181 Elizabeth St Hobart 7000 Nominated Architect: Scott Balmforth 564 T 03 6234 6372 F 03 6231 4939	

TERROIR

Project:
WARRIEWOOD COMMUNITY CENTRE

Drawing Description:
CONSTRUCTION METHODOLOGY PLAN

Drawn by: IB Checked by: JL Scale:1:500@A3

PROJECT NO:	DWG NO:	REV NO:
19319	DA-010-91	01

Drawing Status: DA